

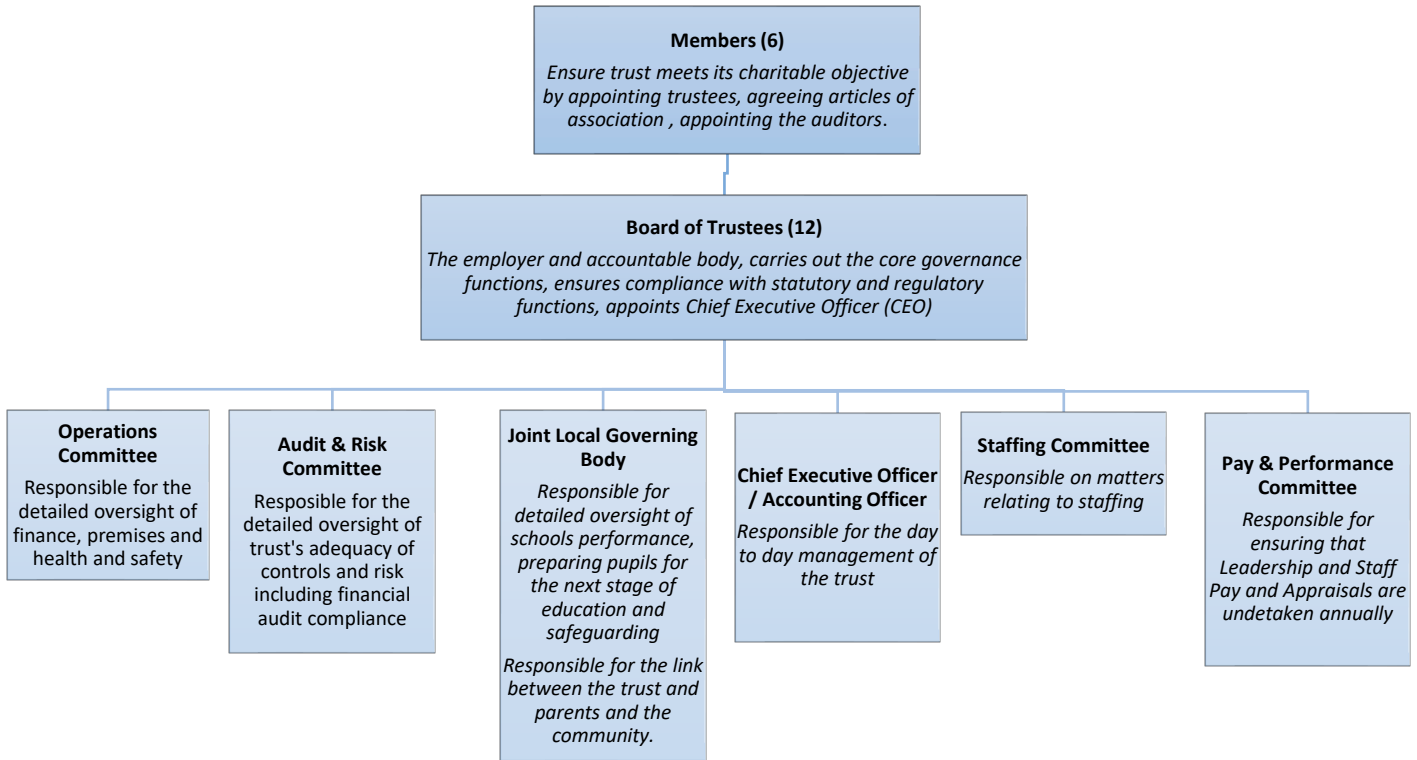


Elmlea Schools' Trust

Elmlea Schools' Trust, a company limited by
guarantee registered in England and Wales
under No. 07626956

GOVERNANCE TRUST STRUCTURE

With effect from 25th October 2024



Clerk to the Board of Trustees: clerktrustees@elmleaschoolstrust.com)

MEMBERS

Name	Term of Office Start Date	Term of Office End Date
Philippa Miles	23 March 2022	22 March 2026
Nick Hester	1 January 2021	31 December 2024
Jon Hollingbery (retired)	10 April 2023	9 Sept 2024
Clare Sanders	10 April 2023	9 April 2027
Ian Venn	10 July 2021	9 July 2025

TRUSTEES

Trustees	Name	Term of Office Start Date	Term of Office End Date
Co-Chair and legal named Chair	Simon Coulson	1 April 2021	31 March 2025
Co-Chair	Adrienne Gallagher	1 April 2021	31 March 2025
Vice-Chair	Alice Dawes	14 July 2022	13 July 2026
	Gareth Beynon	21 August 2022	20 Aug 2026
	Emma-Jane Dalley	14 July 2022	13 July 2026
	Ellie Day Zylinski	17 July 2023	16 July 2027
	Alistair Hill	1 April 2021	31 March 2025
	Hedley Rowlands	1 September 2019	11 December 2026
	Martin Smith	1 September 2019	31 December 2023*
	Christopher Collins	1 September 2023	31 August 2027
	Matthew Grannan	1 September 2023	31 August 2027
	Richard Hill	1 September 2023	31 August 2027
	Gemma Read	1 September 2023	31 August 2027
Co-opted Trustees	*Martin Smith	1 January 2024	31 March 2025
IN ATTENDANCE			
Lorraine Wright, Ex-Officio		CEO (Non-Voting)/Executive Headteacher	
Andrea Bizley		Director of Finance and Operations	

Board of Trustees Committees

	AUDIT AND RISK COMMITTEE	OPERATIONS COMMITTEE	STAFFING COMMITTEE	PAY AND PERFORMANCE COMMITTEE
QUORUM	3 Trustees plus CEO or DFO	3 Trustees plus CEO or DFO	2 Trustees plus CEO (or Deputy Exec Head in her absence)	
COMMITTEE CHAIR	Matt Grannan	Richard Hill	Alice Dawes	Co-Chair of Trustees
COMMITTEE VICE CHAIR	Martin Smith	Matthew Grannan	Ellie Day Zylinski	Chair of Staffing
TRUSTEES	Emma-Jane Dalley	Chris Collins	Gareth Beynon	Chair of Ops
	Alistair Hill	Simon Coulson	Adrienne Gallagher	Chair of LGB
	Hedley Rowlands	Gemma Read	Gemma Read	CEO/Exec HT Appraisal
		Martin Smith		Chair of Trustees
				Chair of Staffing
				Chair of LGB
SENIOR LEADERSHIP	Lorraine Wright	Lorraine Wright	Lorraine Wright	Lorraine Wright
	Andrea Bizley	Andrea Bizley	Andrea Bizley	Andrea Bizley
	Sally White	Sally White		
IN ATTENDANCE				School Improvement Partner

Named Trustees	
Equalities & Diversity Trustee	Gemma Read
Health and Safety Trustee	Richard Hill
Safeguarding Trustee	Gareth Beynon
Staff Wellbeing Trustee	Alice Dawes

APPEALS PANELS will be drawn from the following Trustees:

PANEL A	PANEL B
Chris Collins Alice Dawes Ellie Day Zylinski Adrienne Gallagher Matthew Grannan Alistair Hill	Gareth Beynon Simon Coulson Emma-Jane Dalley Richard Hill Hedley Rowlands Gemma Read

Joint Local Governing Body - Achievement, Standards and Safeguarding Committee
Chair – Gareth Beynon
Vice-chair – Andrea Paraskeva

	Elmlea Infants' School	Term of Office Start Date	Term of Office End Date	Elmlea Junior School	Term of Office Start Date	Term of Office End Date
Named Chair	Andrea Paraskeva	14 July 2022	13 July 2026	Gareth Beynon	21 Aug 2018	20 Aug 2026
Governors	Ria Burridge	12 Dec 2018	11 Dec 2026			
	Verity Cook	1 Sept 2023	31 Aug 2027	Katherine Jackson	20 May 2020	20 Dec 2024
	James Domone	20 May 2020	31 March 2025	Hannah Petherick	1 Apr 2021	31 Mar 2025
	Sarah Rosenburg (retired)	23 Oct 2020	22 Oct 2024	Liz Rees	20 May 2020	31 Aug 2025
	Thomas Worsnop	1 Sept 2023	31 Aug 2027	Dr Ting Ting Yuan	1 Apr 2021	31 Mar 2025
	<i>Vacancy</i>			<i>Vacancy</i>		
CEO/Exec HT Ex Officio Governor	Lorraine Wright (Executive HT)	Ex Officio	Ex Officio	Lorraine Wright (Executive HT)	Ex Officio	Ex Officio
Staff Governors	<i>Vacancy</i>			Sarah Wilson	14 July 2022	13 July 2026
SLT attendance	Inka Vann Kempnnen (Deputy HT)	N/A	N/A	Lee Daubney (Deputy HT)	N/A	N/A

Named Governors	Elmlea Infants' School	Elmlea Junior School
Health and Safety	Thomas Worsnop	Thomas Worsnop
Looked After Children & Pupil Premium	vacancy	vacancy
Safeguarding	Ria Burridge	Ria Burridge
Online Safety	Ria Burridge	Ria Burridge
Special Educational Needs and Disabilities; Mental Health & Wellbeing	Hannah Petherick	Liz Rees
Equalities & Diversity	Andrea Paraskeva	Andrea Paraskeva
Sport and PE	<i>Vacancy</i>	<i>Vacancy</i>
EISA/ PTA link	Verity Cook	Katherine Jackson
Website Compliance	James Domone	James Domone
Sustainability	James Domone	James Domone
Curriculum	Hannah Petherick, Gareth Beynon	