

Elmlea Schools' Trust Newsletter Issue 21 Friday 23rd February 2024



2023/24 Academic year

Infant School Class Assemblies

Click [here](#) for full details

Term 4

Mon 19 Feb - Thurs 28 March

Parents Evenings

Thurs 22 & Tues 27 Feb

(bookings close 7pm Fri 16 Feb)

Travelling Book Fair

Mon 2-Thurs 7 March 3:30-4pm

World Book Day Thurs 7 March

INSET DAY Mon 18 March

Term 5

Mon 15 April-Fri 24th May

May Bank Holiday Mon 6 May

School Photo Day Fri 3 May

Term 6

Mon 3 June - Tues 23 July

INSET DAY Fri 28 June

Last Day of Term

Tues 23 July

INSET dates for 2024/25

Mon 2 & Tues 3 Sept '24 / Fri

25 Oct '24 / Mon 6 Jan '25 / Fri

7 March '25 / Mon 16 June '25

See [website](#) for more info.



Dear parents and carers,

Many of you will be aware of the tragic events in Sea Mills last week. Several members of our school community have been directly affected and our thoughts are with all those who knew and cared for the children and with the local Sea Mills community. If you have been affected please let us know if there is any support we can offer to your child or your family.

Several parents have also said that they have found questions from their children difficult to navigate and the NSPCC has advice which can be found [here](#).

Parent Survey 2024 - Please complete our parent survey. A link was sent to all families yesterday but in case you missed it a link is [here](#).

Parent-teacher meetings - It was lovely to see so many parents at our parent-teacher meetings yesterday and with more next Tuesday. We hope they were informative and do help you understand how your child is getting on. Teachers spend a lot of time preparing for the meetings and these are an important part of our working together to support your child to achieve their very best at Elmlea. We hope the new arrangements of having parent teacher meetings spread across 2 weeks will also enable more parents to attend.

Staff news – Welcome to Sally White who joins us as our new school business manager and joins our Senior Leadership Team. Sally joins us from a local Bristol school and comes with much experience. Sally has spent this week getting to know staff members and has already attended the last PTA meeting and is looking forward to meeting you. Sally will be on gate duties too to say hello.



Breakfast club places available - Our school breakfast club running from 8.00am based at Elmlea has several places available for both Infant and Junior children – call 07870 366315 or via email: elasc.limited@btinternet.com

Russell Education Trust (RET) and Bristol Free school - Last term I wrote to let you know we were having discussions with RET who are the academy Trust for BFS. These have continued and we have now asked the DfE for a decision in principal that if we wanted to join RET they would say yes. If they agree then trustees will begin a process of due diligence. It is bit like buying a house in that the offer needs to be accepted before starting the searches and only once these are completed can a final decision be made. We look forward to holding a meeting in the future for parents with colleagues from RET. In the meantime for any further questions email: future@elmleaschoolstrust.com.

**Lorraine Wright,
Executive Headteacher**

Music News

We enjoyed a performance from Dan and Gabriel in our singing assembly this week. Next week we have a special visitor, Carl Morgan, who is a musician with a sight impairment. He will be talking to both the infant and junior school children about his work and how he manages to get around in his daily life. He will also be performing some of his songs!

Members of all three choirs and singing students are working hard to learn their songs for our Spring Choir Festival on Wednesday 20th March. Please help support them with this whenever you can.

Miss Sadler, Co-ordinator of Music



World Book Week 4th - 8th March

During Book Week on Tuesday 5th March, the author Tamsin Mori will be visiting Emlea Junior School, where she will lead a whole school assembly, telling the children all about her books. She will then be holding a book signing in the library during play time. If you would like to purchase one of Tamsin's books for your child, please follow the [link](#) to Max Minerva's Book company to purchase a copy at a discounted price.

Thanks so much and happy reading!
Miss Leach

Free NHS app to help families care for children

As we are now in winter season, we are going to have more illness going around. If you are unsure or would like any guidance on if your child should come to school, please take a look at the NHS [guidance](#).

HANDi App is a Free NHS app to help families care for their poorly child. As winter sets in and common childhood illnesses become more frequent, families are being encouraged to use a free NHS app to help them decide how best to care for their child. The HANDi app, which has been developed by a team of specialist children's doctors, is quick and easy to use and gives parents and carers expert advice on a range of childhood illnesses. These include diarrhoea and vomiting, high temperature, tummy pain, chestiness, head injuries and common problems experienced by newborn babies. The app takes families through a series of questions about their child's symptoms and then advises on the best course of action, whether that's to treat at home, to make a GP appointment, call NHS 111 or call 999. The HANDi App is available to download for Apple phones from the app store or iTunes and for Android phones at Google Play.



World Book Day theme day Thursday 7th March

"Whipped cream isn't whipped cream at all if it hasn't been whipped with whips, just like poached eggs isn't poached eggs unless it's been stolen in the dead of the night". - Willy Wonka

Aspens, our school lunch providers, are celebrating World Book Day on Thursday 7th March with a special World Book Day themed menu. More Information can be found [here](#) and the menu [here](#). Please ensure that you log onto Aspens and place your child's order [here](#). You can also choose from all the usual options of jacket potato, hot tomato pasta or sandwiches.





10 Top Tips on Supporting Children with Self-Regulation

Learning to deal with everyday difficulties 🤔 🧐 The ability to manage our feelings, thoughts and behaviours in effective ways – known as self-regulation – is gained gradually through childhood and into adolescence. It's acknowledged as a pivotal element in young people's development but can prove trickier for some children to master than others 😊

In our [guide](#) this week, you'll find expert suggestions on ways of supporting children as they build their ability to self-regulate. Demonstrating how you process your own emotions – and selecting appropriate literature and other resources – figure in our collection of practical tips on helping young ones on their journey towards self-regulation.

Shine Easter Holiday Clubs

Shine Holiday Clubs are running on site at again at our school this Easter. For a limited time, get 20% off using the code **Early Booker** (Valid until Sunday 10th March)

For children from Reception to Year 6 from 09:00-4:00pm with early and late hours if you need them, there are loads of different activities at school. Including Gymnastics with Circus skills, Mini & Multi Mash Ups, Little Steppers and Play in a Day – Down the Rabbit Hole. With the reassurance of a 48 hour cancellation period, you can book early knowing if your plans change, you can cancel your booking.

Click [here](#) for details or visit [Holiday Clubs](#) to see what's on. See you at Shine!



Mad Science Club - not running next week

Please note there is no club next week (27th February) due to parents evening. There are 3 sessions remaining on the 5th, 12th and 19th March. Thanks

Term 5 after school tennis on Wednesdays 3.15-4.30pm

A fun after school tennis club at Elmlea for children in Years 3 to 6 at Elmlea run by Henleaze Lawn Tennis Club's highly qualified and LTA accredited coaching team. on a Wednesday from. All equipment is provided and everyone can borrow a racket.

For further information and to book, click [here](#).



Community News



Penny Brohn Easter Egg Hunt Event

The Penny Brohn annual Easter egg hunt on Wednesday 3rd April at their National Centre in Pill.

The Easter Bunny has lost the password to the rabbit hole where he keeps all the Easter eggs for children. To remind himself of his password, in case he ever forgot, he left giant eggs with letters on around the garden, which when combined reveal his password. Once the children figure out the password they can claim a yummy chocolate treat. The event hopes to be a lovely day with children enjoying an array of 'egg-citing' activities from meeting the Easter Bunny, playing garden games and making Easter crafts. We will also have face painting, refreshments including cakes on the day. Families are welcome to bring their own picnics and relax in our gardens. The event poster can be found [here](#).

PTA News

New PTA committee members needed for next academic year

The PTA is at the heart of the school community and is hugely important to making Elmlea a success.

We'd like the new members to start shadowing this year so the committee is set-up and running by September. We're looking for 2 x Co-Chairs, a Treasurer and a Secretary. Please contact us if you're interested



Winter Raffle: Be in it to win it.

Only a few hours left to buy tickets for the PTA Winter Raffle. Don't miss out!

We have some great prizes on offer including:

- ◇ Goldfinch Create & Play voucher (worth £70)
- ◇ Bottle of 2005 LA CROIX DE BEAUCAILLOU, ST JULIEN (worth £85)
- ◇ Two Vivobarefoot shoe vouchers (worth £160 each)
- ◇ Two 1 hour massage vouchers at The Medical in Westbury (worth £59 each)
- ◇ Clifton Lido voucher (worth £30)
- ◇ Family of 4 ticket to watch a Bristol Flyers Basketball game

Tickets are available to purchase now at www.pta-events.co.uk/eisa available until 8pm Friday 23 Feb
Winners will be notified by email or phone week commencing 4th March. A list of winners will also be sent out via class reps.

Plant and Cake sale: 8th March 3:15-4pm

Kick start the spring with a houseplant, some summer bulbs or even an endangered species of tree.

All cakes £1.00. Plants range from 50p - £15 for trees.



Upcoming events:

Bag2school - 26th April - before school. Raising funds from your unwanted clothes. Watch this space for further details.

Quiz - 17th May

Summer fair - 6th July

We're moving to one Facebook page! The Infant's facebook page has been renamed - Elmlea School's Trust PTA Group and the Elmlea Junior Facebook site will close from Easter.

If you haven't already joined, sign up here: <https://www.facebook.com/groups/576344152516915/>

Don't forget to use [Easyfundraising](#)

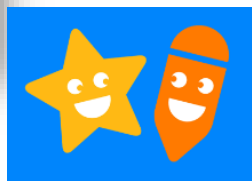
Over 7,000 brands donate, so you can raise a FREE donation for Elmlea Schools' Trust Association every time you grab a bargain!



Best wishes, The Elmlea PTA
elmlea.school.pta@gmail.com



Year Group News



Top DoodleSpell class this week is 2R - amazing work and well done everyone!

Reception

Reception have had a busy first week back in Term 4. Please remember to read often at home and record it in your child's reading record book.

Please can we request any donations of socks or tights for our EYFS spare uniform boxes.
Thank you!



The Reception Team

Year 1

An exciting discovery at the start of the week sparked much enthusiasm and excitement in Year 1! On Monday, Steve had left us something that he had discovered in the grounds during the holidays. To our amazement, we found out that they were dinosaur bones! We later discovered some interesting security footage that showed us



T-Rex came to visit when we were away! This has been a wonderful way to launch our new Dawn of the Dinosaurs topic and something that the children have loved. We have



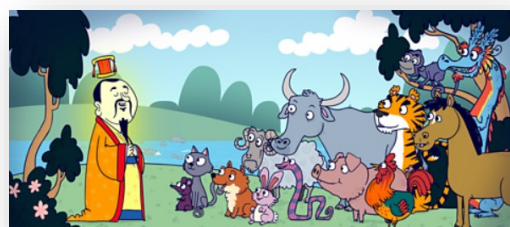
linked this to our writing and history this week too. Well done Year 1!

Year 1 Team

Year 2

Year 2 have had a lovely first week back with their new topic Myths and Maps. They have been exploring how to use a key in a map to identify different areas and have already explored two different myths.

We started in Greece with the story of King Midas before heading to China for the Race to the Zodiac. These led to some good discussions about the lessons to take



from them. In science we did some more work on materials and became inventors by exploring how we could use things to make new inventions such as pipe cleaner key rings.

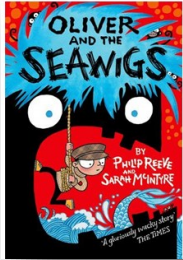
Next week we will be heading to India for a myth and doing more map work.



Thank you, Year 2 team

Year 3 Year 3 have returned to school refreshed after their half term holiday and enthusiastic to continue our Splash topic theme. In English, pupils have successfully identified the key features of a narrative genre and have been inspired when reading our current text 'Oliver and the Seawigs' by Philip Reeve and Sarah McIntyre. In maths, children have consolidated and extended their knowledge and understanding about unitary fractions and have practised their fluency and problem solving when ordering and comparing this type of fraction. Pupils really enjoyed planning their comic strip stories which they are going to publish in computing using the Book Creator application.

In Science, children have recapped their prior knowledge about forces from last term and have started to learn more about magnets. Pupils are excited about the upcoming NW24 STEM Marble Run Competition and have been sharing different types of marble runs, that they have constructed at home, in preparation for this.



Outdoor PE rotations are basketball and tennis this term and pupils demonstrated some excellent skill development and teamwork this week. Well done, Year 3!

Year 3 Teaching Team

Year 4 What a busy week for Year 4!

We have started our play rehearsals this week, which has been very exciting! We have worked very hard to learn our parts over the half term too! In Maths, we have started working on fractions. We have been converting from improper to mixed number fractions. In English, we have started planning a piece of characterisation writing. We have had fun using expanded noun phrases, similes and personification.



Well done for a fantastic start to the Term Year 4!

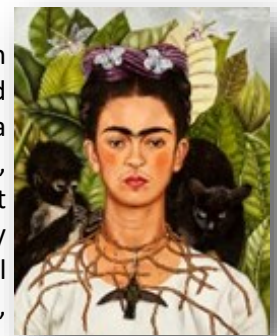
Y4 Teaching Team

Year 5

What a great week back first week back we have had in Year 5! The children have been busy learning all about wind turbines and the importance of renewable energy sources and have begun our fieldwork project (investigating where would be the best place to put a wind turbine on our school grounds). The children also took part in an exciting workshop,



where they were tasked with building a crane out of kinex that would lift and transport a wind turbine. Working in partners they problem solved, engineered, and constructed some wonderful cranes and every team was successful in completing the task. In Art, we studied the artist Frieda Kahlo and some of the wonderful artwork she has created. The children then began planning their own self-portrait which they will be working on over the next few weeks.



Year 5 Team

Year 6

First week back and year 6 have launched themselves into the advertising world by writing about a sustainable product called a 'stroodle'.

They have learnt how to calculate the area of triangles and parallelograms and in science, they have tried to create a classification system - which is very tricky!

In geography, year 6 have thought about how they could make the school more sustainable and are researching the most suitable location for a wind turbine.



Year 6 Team