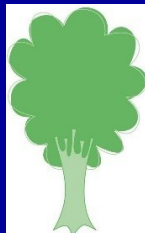


Elmlea Schools' Trust Newsletter Issue 18 Friday 26th January 2024



Elmlea
Schools' Trust

2023/24 Academic year

Term 3

Tues 2 Jan- Fri 9th Feb '24

Disco Yr 3, 5 & 6 Fri 26 Jan

Disco Rec, Yr 1, 2 & 4 Fri 2 Feb

Year 2 Class Assemblies

2W 2 Feb, 2SC 8 Feb

Click [here](#) for full details of all
Infant School Class Assemblies

Term 4

Mon 19 Feb - Thurs 28 March

Parents Evenings

Thurs 22 & Tues 27 Feb

INSET DAY Mon 18 March

Term 5

Mon 15 April-Fri 24th May

May Bank Holiday Mon 6 May

Term 6

Mon 3 June - Tues 23 July

INSET DAY Fri 28 June

Last Day of Term

Tues 23 July

INSET dates for 2024/25

Mon 2 & Tues 3 Sept '24 / Fri

25 Oct '24 / Mon 6 Jan '25 / Fri

7 March '25 / Mon 16 June '25

See [website](#) for more info.

Dear parents and carers,

Today in school it has been the turn of all the children in Yr4, who have had the opportunity to travel to Birmingham Arena to sing as part of 5000 strong choir. The children will be performing this evening a range of songs and dances they have learnt to an enthusiastic and appreciative audience. It is a fabulous experience for the children, many who haven't been to an arena event such as this. We will report next week on the highlights! It is a long day and we are very grateful to the Elmlea staff and volunteers attending, giving up their Friday night to provide this unforgettable experience for the children.



NW24 Internet safety event.

This week on Wednesday 24th January the inaugural NW24 Online Safety Conference took place at the Redgrave Theatre in Clifton. Mr Vallé was able to take 10 children from Year 6 (the Elmlea Digital Leaders) and 10 children from Year 5. This was a great opportunity for 18 different schools from across North Bristol to meet together, listen and discuss the important issues of internet safety.



There were engaging talks from Avon and Somerset Police and quizzes and sketches performed by the theatre company Unique Voice. The Digital Leaders are going to use the skills, knowledge and tips they've learned and deliver this in assemblies for both the Infants and Juniors, across Internet Safety Week and to celebrate Safer Internet Day on Tuesday 6th February. Thank you to Mr Valle for giving the children this experience.

Lorraine Wright,
Executive Headteacher



Children's mental Health Week: January 29th - February 2nd

Children's mental Health Week is taking place at Elmlea Schools Trust the week of January 29th - February 2nd Supported by Place2Be, the theme of this year's Children's Mental Health Week is 'My Voice Matters' is about empowering children and young people by providing them with the tools they need to express themselves. Expressing yourself is about finding ways to connect and share feelings, thoughts or ideas, with others through creativity.

This could be through art, music, writing, and poetry, dance and drama, photography and film and doing activities that make you feel good.

In addition, to activities happening throughout the week at school. pupils are asked to help raise awareness during the week by posting a photo/video on Tapestry and See-saw of them expressing themselves by the end of the week. Teachers will view all contributions and celebrate every child in school. Remember it is all about sharing the things that make us who we are and feel happy. You may choose to dress in your favourite colour or choose a colour which expresses how you're feeling as well. Either way it is a chance for the children to express themselves and we look forward to seeing what they produce!



Teacher-led after school clubs

Places for Elmlea Junior School teacher-run after school clubs in Term 4 have been confirmed by email – please ensure you sign your child up on Arbor **by Monday 5th February**. Please note we are unable to accommodate any further requests to join a club for next term.

Shine February Half Term Holiday Clubs

Shine are back at our school in the February Half term running Holiday Clubs. More and more children are enjoying Creative Workshops, Performing Arts, Gymnastics, Dance and Mash-Up days. Come and join your friends at Shine!

OFFER Booking early gives you 20% off when you use the code Early Booker. Discount ends Wednesday 31st January. Don't worry if your plans change, we offer a full refund as long as you cancel with 48 hours notice. More information can be found [here](#).



Inclusion Information and Support



Have you heard of spoon theory?

It is nothing to do with eating!! It is a way of explaining and understanding how people with physical and mental conditions manage their energy levels and can be helpful for children (and parents!) to use as a way of planning days and weeks to account for energy levels.

This video is suitable for KS2 children and shows how emotions throughout the day can take up spoons [Spoon Theory](#) While this [website](#) explains it more for adults.

Here are some useful visual representations for understanding [energy management](#) and [fatigue](#) for adults and children.

Little Stars SEND Group-Come and Play!

Please find information [here](#) about a FREE group for children aged 0-5 years who need a little extra support.

We have excellent resources as well as targeted activities for the children to engage in, and a garden that is very safe and easily accessible.

Tuesdays 1:30-2:30pm, Brentry Lane, BS10 6RG
Visit the website www.everyfamily.org.uk

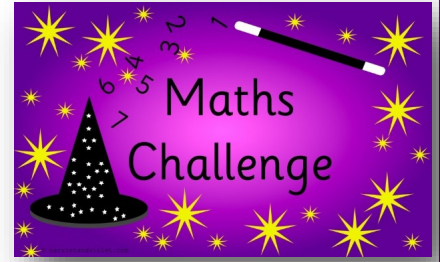


Year 4 & 5 Elmlea Maths Challenges

We are extremely proud of the children in Year 4 and 5 who represented Elmlea at Maths Challenge afternoons last week.

Olivia P, Lucy P, Robbie S and Ted A represented the Year 5s at Bristol Grammar school (alongside 45 other primary schools), where they worked extremely hard to complete lots of different challenges.

Sophie Z, Rohan F, Tristan B and Lyla R were the Year 4 representatives. They spent the afternoon at Redmaid's Junior School, where again they worked fabulously hard to complete lots of different maths activities and challenges. All of the children were fabulous.



Sports News - Y5 & Y6 Basketball Tournament



Last week saw 10 children take to the basketball courts of St Bede's school in a tournament against 9 other schools. The competition was fierce across the two teams that were participating with only 7 minute games to make an impact the children had to react quickly to their opposition. Both teams played extremely well using the space on court to pass to each other and initiate attacking dribbles. The children hustled their opposition when playing defense and capitalised on the pressure this caused. The children collectively won 6 games, drew 1 game and lost 4 games, really well played everyone and a big thank you to Mrs Rae who helped at the event.

Hannah Paterson, Head of PE and School Sport

The Big Garden Birdwatch 26th- 28th January

It is the RSPB's annual Big Garden Birdwatch this weekend and we would love the Elmlea community to get involved!

This week, the children enjoyed an assembly about the event and found out more about how they could take part. A big thank you to the members of Eco Council who have helped with promoting this at school!

You can visit the RSPB's website to find out more: [Big Garden Birdwatch \(rspb.org.uk\)](http://Big Garden Birdwatch (rspb.org.uk))

The children have some Seesaw activities to help them take part over the weekend. Please do upload any pictures to Seesaw! Happy birdwatching!



Mrs Smith and Mrs Emery-Symons

Reminder: Parents evening bookings open on Monday 29th Jan at midday

An email was sent to all parents and carers on Monday about Parent-Teacher Meetings, which will be taking place in person at school on Thursday 22nd & Tuesday 27th February from 3.30-6:40pm (*Thursday 22nd & Monday 26th February for class 3CW only*)

Booking will be via Arbor and will go live at 12 noon on Monday 29th January.

If you have any problems using Arbor or with your booking, please email the school office: info@elmleaschoolstrust.com



February theme day with Aspens - Thursday 8th February

Come and join us for our year of the dragon, Chinese New Year theme day - the menu can be found [here](#).

Please ensure that you log onto Aspens and place your child's order, as this Theme Day wasn't available to book earlier in the term so your child may have a missing lunch on this day.

Login to Aspens [here](#).

You can also choose from all the usual options of jacket potato, hot tomato pasta or sandwiches.



PTA News

Please note there are time and/or date corrections for years 4, 5 and 6 from the last newsletter due to a conflict with Young Voices! Please refer to the following NEW times and dates only!!



Year 3, 5, 6 disco: 26th Jan Yr 3: 3:30-4:15pm, Yr 5: 4:30-5:15pm, Yr 6 : 5:30-6:15pm
Reception, Yr 1, 2 and NOW YR 4: 2nd Feb Rec: 3:30-4.15pm, Yr 1: 4:30-5.15pm,
Yr 2: 5:30-6:15, Yr 4: 6:30-7:15.

Tickets £4 - for 45 mins of fun and dancing! Please email elmlea.school.pta@gmail.com for free tickets if the event is cost prohibitive.

This is not a drop off event, for this event to run we need to have a minimum number of parents to children with 1 parent responsible for up to 3 children in the infants and 1:6 for juniors. Please arrange with other parents to ensure your child has a parent responsible for them attending the disco.

Please ensure your child has a bottle of water with them. There will be a bar selling refreshments for parents.

Tickets won't be issued for the event, attendees will be checked off a list upon arrival, so please include your child's name when booking.

Get your tickets at www.pta-events.co.uk/eisa

Information on how to volunteer to follow via the class reps.

Next PTA meeting: Tuesday January 30th, in the Junior Hall 19:45 for a 20:00 start

All are welcome - please come along, hear the latest plans, share your ideas or volunteer. It's a great opportunity to be involved in Elmlea, help support the school, your child's education and our community. There are lots of different ways you can help with differing levels of commitment.

And we need a new treasurer next academic year as our wonderful Tina is stepping down after 3yrs. If you'd like to volunteer for this role let us know or come along on 30th Jan to find out more. We're asking early to allow time for shadowing this year.

At the meeting to be held on Tuesday 30th January 2024 there will be a vote to formally change the name of the PTA with the Charity Commission. As a registered Charity all parents of the school are considered members of the PTA and, as such, entitled to vote on this matter.



Volunteers needed to help arrange the summer fair - we're starting to plan for the summer fair, if you would like to be on the summer fair committee come along to the next PTA meeting or contact us on this email address elmlea.school.pta@gmail.com

Thank you to all those who bought tickets for our wine tasting event, which has proved incredibly popular, selling out in just 5 days.

Raffle tickets for a chance to win some amazing prizes on the night will be going on sale shortly.



New Year, New Uniform Shed We are currently looking for a 12x10 shiplap shed to house uniform and costumes for plays/dress up days - making it more accessible for all our families, and reducing fabric waste to help the environment.

Does anyone have any connections to a company? Could anyone secure funding for it through a company? We would love to hear from you! Please get in touch using the email below.

elmlea.school.pta@gmail.com

Don't forget to use [Easyfundraising](#)

Over 7,000 brands donate, so you can raise a FREE donation for Elmlea Schools' Trust Association every time you grab a bargain! Thank you to all you new supporters out there!



Best wishes, The Elmlea PTA, elmlea.school.pta@gmail.com



Year Group News

Reception

Thank you to Lucy's Dad Neil who came in this week to talk to all of EYFS about his job as an engineer. The children thoroughly enjoyed it and learnt so much - thank you!



Donations needed: We are looking for donations of socks and tights that we can use as spare uniform in EYFS please. If you have any please pass them to your child's class teacher - thank you!

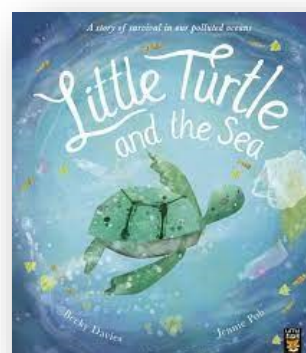
The Reception Team

Year 1

This week has been a really great week across the year group. We have enjoyed starting a new writing unit where we have been focusing on the use of verbs and exclamation marks through using our new story: Little Turtle and the Sea.



This book explores the issue of pollution in the sea which the children have been so passionate about. In maths, we have explored estimating on a number line as well as filling in blank number lines. Another key highlight of our week was our computing lesson. We have been looking at controlling robots. We used BeeBots to see if we use the buttons to direct them around our classrooms. Have a great weekend!



Year 1 Team

Year 2

Year 2 started the week with a Great Fire of London workshop and a visit from the therapy dog! In maths, we have been working hard to find adjacent multiples in the 5x tables. The children have also been discussing the link between the 5 and 10 times tables. We made some ancient-looking scrolls which you may have been lucky enough to read, the children enjoyed publishing their emotive diary entries.



In science we thought about good and bad materials for objects inspired by Michael Rosen's 'Woolly saucepan' poem! Year 2 also did some taste testing of different breads ready to have a go at making some tasty treats of their own in the coming weeks.

Thank you, Year 2 team

Year 3

Children in Year 3 have proudly finished publishing their writing progress instructional texts this week, having planned, drafted and edited them carefully during their English lessons. Children enjoyed sharing them with their intended audience, their Year 6 buddies. In maths, pupils have been reflecting on prior learning, making sure that they are confident with the strategies they can employ and also the tables' knowledge that they can utilise effectively when encountering and solving mathematical problems. Pupils have continued their unit of work on forces and magnets, continuing their investigations comparing how things move on different surfaces. In Art, children have experimented with a range of colours and materials to produce a creative, textured collage. In computing, pupils used Scratch coding to create jokes between three sprites. We were also kindly left with a VR set to borrow to enable everyone in the year to have a virtual experience of a visit to an offshore wind turbine. Well done, Year 3!



Year 3 Teaching Team

Year 4

In PSHE this week, we have been focusing on knowing what it means to be resilient and to have a positive attitude to our dreams and goals. We have all had to think of a time when we haven't quite succeeded at something and to think about how we might have another go, but in a different way.

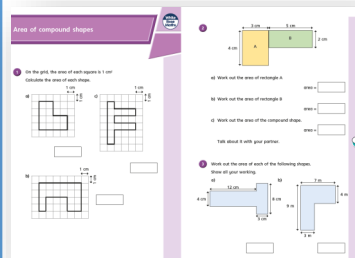
We also talked about how might not always agree with other people on everything, but we try to show respect for their thoughts and feelings anyway.

In English, we have continued focusing on Kensuke's Kingdom. We have had a go at writing snippets of Diary entries as if we were in the story. We have also learnt about how to recount events in chronological order.

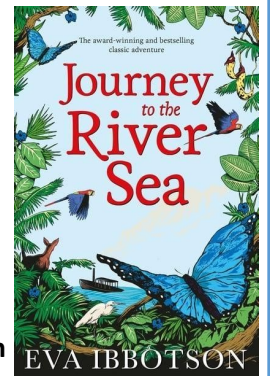


Y4 Teaching Team

Year 5 It's been a busy and exciting week in Year 5! Our 'On the Latin Side' topic continues to be fascinating and this week we have been learning about biomes which has been really interesting. We have been writing our 'Journey to the River Sea' narratives and have enjoyed being creative with our writing.

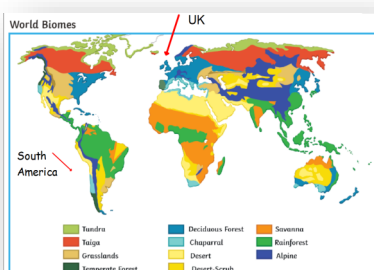


In maths, we have been exploring area and perimeter and practising these skills with compound shapes. We are really enjoying our work on forces in Science and this week we were investigating friction with some fun practical work! This term in PE, we are doing basketball and we have been excited to really see our skills developing!



Year 5 Team

Year 6 Year 6 have been very busy this week. In our art and religion and world views lesson, we explored line and discussed why a drawing or a painting is effective by looking at the qualities of line. We then did some observational drawing and practised using a backwards and forwards motion to observe and imitate this picture.



In geography, we have been learning all about the different biomes of South America. We came to learn that there are many of them, due to there being such a diverse range of landscapes and climates on this continent. After this, we tried to guess which flora and fauna would be most common in each biome. Well done year 6- a productive week!

Year 6 Team