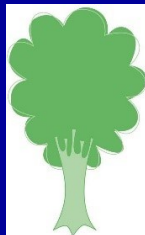


Elmlea Schools' Trust Newsletter Issue 13 Friday 8th December 2023



Elmlea
Schools' Trust

2023/24 Academic year

Term 2

Christmas Lunch

Rec, Yr 1, Yr 2, Yr 3, Yr4

Tues 12 Dec

Christmas Lunch Yr5 & 6

Weds 13 Dec

*Wear a festive jumper for your
Christmas lunch*

Last day of term Fri 15 Dec

Term 3

Tues 2 Jan- Fri 9th Feb '24

INSET DAY Tues 2 Jan

First day of term Weds 3 Jan

Year 2 Class Assemblies

2R - 26 Jan, 2W 2 Feb, 2SC 8 Feb

*Click [here](#) for full details of all
Infant School Class Assemblies*

Term 4

Mon 19 Feb to Thurs 28 March

INSET DAY Mon 18 March

Term 5

Mon 15 April-Fri 24th May

May Bank Holiday Mon 6 May

Term 6

Mon 3 June - Tues 23 July

INSET DAY Fri 28 June

Last Day of Term

Tues 23 July

See [website](#) for more info.



Dear parents and carers,

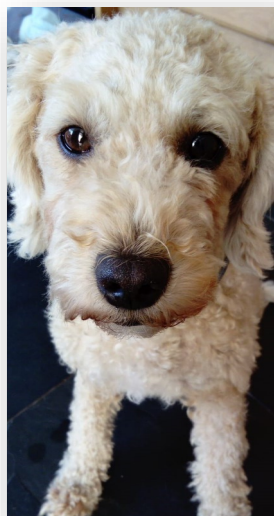
Thank you for all your lovely comments and emails of appreciation for the school plays that your children have taken part in. The plays have all been spectacular and your children have impressed us all so much. Thank you for coming into school to watch them and to our staff teams for making them happen.

Big thank you also to the PTA and their team of volunteers for holding our Christmas event yesterday evening. Despite the rain it was a real success and thank you to everyone who turned up to support the event and help raise funds for school.

Big thank you too to our site team of Henry and Steve for their support for this event by ensuring it all went smoothly and also that everything was shipshape for the start of school today.

**Lorraine Wright,
Executive Headteacher**

Elmlea is getting a therapy dog!!



On Wednesday we had a small, furry visitor walking around school! It was a visiting therapy dog called Cora. Cora is a 4-year-old Cavapoochon (Poodle/Cavalier King Charles spaniel/Bichon Frise) who volunteers in schools with her owner Sarah. Cora is Kennel Club trained and qualified as a therapy dog with Pets As Therapy in 2019. She has previously worked with students at University of Bristol and another local primary school. She is particularly good with young children and they quickly relax with her as she is very small and calm, not to mention cute also!

Cora will be visiting Elmlea twice a week starting in January and she will work with classes in all year groups and all pupils will have the opportunity to ask questions about her and to stroke her if they wish. Cora will also be working with individual children in 1:1 sessions where she is particularly experienced at building trusting relationships, as she listens attentively. Children can sing to her, read her books, talk to her and enjoy calm time with her. Children will learn how to interact safely with Cora, skills that can be transferred into any interactions they may have with dogs out in the community.

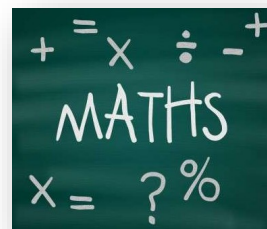
Cora is an amazing dog who responds to the child she is working with and how they are feeling. All the children who have worked with her have given really positive feedback on their sessions. At her induction session on Wednesday, Cora met a few children 1:1, and reported her feelings on being appointed to the school through her waggiest tail ever! We look forward to welcoming Cora to start work with us in January. If any parents have any questions about their child having contact with a dog, please contact Miss Flook (Inclusion Lead) via the school office.

Expression of interest in a KS1/KS2 maths information evening.

Following the success of the recent KS1 information evening, we would like to find out if there is interest in a KS1/KS2 maths information evening.

Please complete this [Microsoft Form](#) if you would be interested in attending.

Many thanks, Mr Weller



Reminder: No teacher-led clubs in the last week of term

Please note that there will be no teacher-led after school or orchestra clubs running next week, the last week of term.

This includes' Junior choir (Monday pm), Junior Chamber choir (Wednesday am) Infant choir (Thursday pm) Orchestra club, Junior Morning Club (Nessy and Touch-typing)

The sessions will start again from Monday 8th January 2024 (the 2nd week of Term 3).

For external clubs dates, please refer to your communications from the club leaders.



New Club coming next Term - Mad Science

Mad Science will be running an 8 week club, in each school on Tuesdays in Terms 3 and 4. The cost of the 8 week course is £76 per child. Make sure you sign up by the 7th January 2024.



Infant club [information](#) | Junior club [information](#)



Shine After School Club programmes starting from January.

January club bookings will go live for booking on Wednesday 13th December at 12:30pm.

Infant club [information](#) | Junior club [information](#)

Inset Day Funday - Shine are also running a funday on site at school on Tuesday 2nd January to cover the Inset Day. There will be a carousel of sports and creative activities throughout the day with early drop off and late stay available. For more information, please click here: [Inset Fun Day](#)

Henleaze Tennis Club Christmas holiday camps - whole day available

Henleaze Lawn Tennis Club's Junior Tennis Club and holiday camps cater for children from 4-13 years of age and are designed to be fun for all levels of juniors. They are run by our highly experienced and fully qualified coaching team providing the children with a fun, social and active environment.

We are running both morning camps from 8.30am-12pm and full day camps 8.30am-3pm at Henleaze. Both options are available to book [here](#).



Community News

RWA Family Newsletter December 2023

Courses this month include:

Art Skills 7-11's - Winter Landscapes with Abigail Reed
Wednesday 20 December | 2pm - 4pm | £10 Book [here](#)

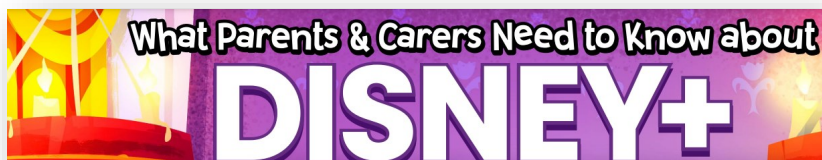
Free Family Workshop - Paper Plate Snow Globes
Friday 22 December | 10am - 12pm | FREE Book [here](#)



What Parents and Carers Need to Know about Disney+

With over 150 million subscribers worldwide Disney+ has enjoyed a steady rise in popularity since launching 4 years ago: the platform's library of treasured old-school animated favourites, modern classics & original series means that it can offer a rich seam of engrossing content that caters for young and not-so-young users alike 📺

A consequence of this is the presence of the sort of age-inappropriate material one might not expect to find on the platform, given Disney's status as a purveyor of family entertainment. There's useful advice in this week's [#WakeUpWednesday](#) guide, as Disney+ comes under the microscope.



We need your spare pants, socks, clothes!

If you have any spare good condition pants, socks and clothes, we would be very grateful if you could bring them in to give to your class teacher as we are running very low in Reception and Year 1!

Many Thanks.



Inclusion Information and Support

Pop up SEND events happening in the new year

Details of the parent/carer pop up SEND events that are happening in the new year can be found [here](#).

The first session focuses on families at the beginning of their SEND journey - there will be open questions at the end and an opportunity to speak to an advisor.

The second event aims to offer more of an open forum to discuss SEND needs and gain advice and signposting from the SEND & YOU team.

They are free events which are open to all but please do sign up so we can know numbers.



Bookings open for 16th January Foodbank Cookery Course in Avonmouth

Bookings are now open for our January 2024 Cookery course which runs for six weeks on Tuesday mornings at our Social Justice Hub at St. Andrew's Church in Avonmouth. Information can be found [here](#).

We also have a community lunch on Tuesdays at St. Andrew's Church so we find many on the cookery course decide to stay and have lunch together at the end of the morning.



From the PTA

What an amazing start to this Academic year: Cake Sales, Children in Need, Save the children, Christmas nativities & plays, Christmas Jumper day, Christmas cards and our amazing Christmas event at Elmlea last night!



Together we have raised over £1,000 since the year began and we still have the hamper ticket sales to go.

A huge thank you to all the organisers and volunteers who have put in so much work and effort, juggling around many other commitments to enable the events to happen, and for everyone who has attended.

You may have missed our Christmas tree collection, but you can still buy your tree & support Elmlea. A local company called ALI & JOE'S have offered Elmlea £5 for every tree bought or rented from them. They can even deliver straight to your door.



Use the code **ELMLEA5** at checkout.

www.aliandjoes.com

🎄 Christmas Hamper Time 🎄

There's still time to buy your tickets for a chance to win one of the Christmas hampers.

Tickets can be purchased until 10 December at www.pta-events.co.uk/eisa

The draw will be on the 11th December.

Don't forget to use [Easyfundraising](#)

Over 7,000 brands donate, so you can raise a FREE donation for Elmlea Schools' Trust Association every time you grab a bargain! Thank you to all you new supporters out there!

Events for next term:



PTA meeting, all welcome! Jan

Discos for Juniors & Infants—end Jan / early Feb

Best wishes, The Elmlea PTA

elmlea.school.pta@gmail.com





Infant School Class Christmas Parties - Thursday 14th December

Reception, Year 1 and Year 2 will be having a Christmas Party in their classrooms during the afternoon on Thurs 14 Dec with music, dancing and fun! Please send your child to school in their party clothes and with a small party snack (this **does not** replace lunch) in a named container. **No nuts or seeds please and please also note that cannot accept ANY forgotten party food after drop off.**

Reception

Thank you for all your support with the Nativity performances this week - we hope you enjoyed the show!

- Class Christmas Party - Thursday 14th December (details above)
- The EYFS playground gate will now open at 8:45am each morning (weather permitting). This is to allow us to set-up under the canopy and in the playground for the day. When you come into the playground, please try not to play with the resources so that they are ready for the start of the day. Thank you!



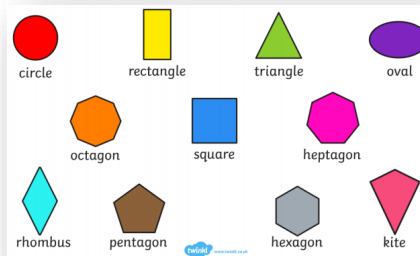
Can you help? Next term our topic is 'People Who Help Us'

Do you work in an emergency service or a job that helps people? We would be extremely grateful if you would volunteer to come in and talk to the EYFS cohort next term about your job role. Please get in touch with Miss Neal if you are interested: abie.neal@elmleaschoolstrust.com

The Reception Team

Year 1

In the penultimate week of term, we have had a very tiring but brilliant week! It was show time for us this week with 2 performances to our loved ones and it is safe to say, we had the best time sharing our Winter Production with you! We hope you all enjoyed it as much as we did. We still had plenty of time left over to carry on with some great learning too. In maths, we have reviewed simple 2D shapes and their properties. In computing, we explored the use of lines and shapes when creating digital media and in science, we rounded up our materials topic by creating a texture wheel for different items!



Year 1 Team

Year 2

Year 2 had an awesome time this week putting on our performances to all the parents and carers who managed to come along and watch. They were so excited before it and they were very proud to receive positive feedback too. Thank you so much for the help with learning lines at home and preparing costumes.

Alongside this, we have been looking at how we can partition two digit numbers into three parts and have begun looking at 2D shapes. Please can you bring any cardboard into school for a junk modelling project on the first day back next term.

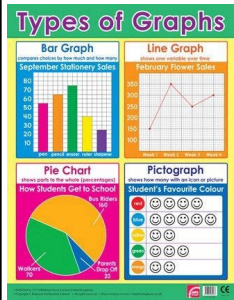
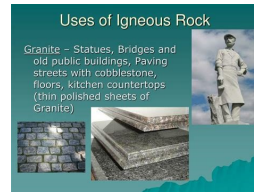


Also, we will be having a class party next Thursday, more information can be found at the top of the page.

Thank you, Year 2 team

Year 3 All members of Year 3 performed brilliantly in both the matinee and evening performances of our production of 'A Hint of Snow White'! Everyone was incredibly proud of all of the children for their acting,

singing and costumes and they really did 'peak' for Tuesday's final performance. Aside from the play, pupils have learnt about performance poetry and have created their own poem in English. They delighted in meeting with their Year 6 buddies to share their previous non-chronological report unit of work. The Year 6s were impressed and happily peer marked their work with some astute observations. In maths, children have explored a range of graphical representations of statistics using pictograms, tally and bar charts. In science, pupils have learnt more about the uses of rocks and have linked this to their knowledge and understanding about the properties of rocks. Well done, Year 3!



Thanks for all the positive feedback on the Year 3 performance. We're so proud of how well everyone performed and it was wonderful to see every child shine. If you did enjoy the performance, we'd love it if you were able to donate something to our charity of choice, **Caring in Bristol**. The children picked this Bristol based homeless charity because they felt that people shouldn't be without a home or shelter during the cold winter months. Any donation, however little, is going to help support a great cause. You can donate [here](#).

The Year 3 Teaching Team

Year 4 Year 4 have had a busy week and they have enjoyed planning and writing their letters home about the year so far. It has been lovely for us all to reflect on personal highlights and the fantastic trips and activities that we have managed to fit in since September.

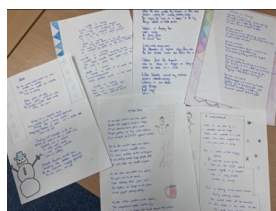
The children have decided which of the Tudor monarchs is their 'Top Tudor' and have presented this in their topic books. In maths, pupils have worked to improve their knowledge and understanding about geometry. In Science, Year 4 have learned all about the workings of the digestive system and its component parts. Well done, Year 4!



Young Voices Choir T-shirts For any year 4 parents that missed the school deadline for ordering the official YV2024 Choir T-shirts please use this shop link: <https://shop.youngvoices.co.uk/>

Y4 Teaching Team

Year 5 Wow! What a fantastically busy week we have had in Year 5 this week! In English we have become poets as we have written our own Winter Poems. Within these we have thought hard about the effect of our poem on the reader and used lots of different literary features to help us convey a Winter Winterland. We have also published these to send to our Linking School buddies over at Knowle Park. In DT, we finished constructing and decorating our wonderful thrones for the Greek



Gods. Within maths, we have been exploring shape and space and having some fun building and making our own 3D shapes and identifying different shapes based on their properties. Finally in topic we had some time to come together and do some last minute preparations for our Night at the Museum Exhibition on Monday – which we are all very excited to showcase.

Year 5 Team

Year 6 Year 6 have put the finishing touches on our Greek thrones and they look very impressive - just in time for showcasing in our Greek Museum on Monday afternoon. (All parents welcome!) We tied up our topic on Judaism by learning about one of the most popular festivals - Hannukah. We listened to the awesome Maccabeats singing and even played Dreidel. In science, we have planned an experiment that will affect shadows which we will test next week. Finally, we enjoyed meeting up with our Year 3 buddies as they shared their fantastic writing with us.



Year 6 Team