

Elmlea Schools' Trust Newsletter Issue 8 Friday 3rd November 2023



Elmlea
Schools' Trust

2023/24 Academic year

Term 2

Tues 31 Oct to Fri 15 Dec '23

National Winter Jumper Day

Thurs 7 Dec

Rec, Yr 1, Yr 2, Yr 3, Yr4

Christmas Lunch

Tues 12 Dec

Yr5 & 6 Christmas Lunch

Weds 13 Dec

*Wear a festive jumper for your
Christmas lunch*

Term 3

Tues 2 Jan- Fri 9th Feb '24

INSET DAY Tues 2 Jan

First day of term Weds 3 Jan '24

Term 4

Mon 19 Feb to Thurs 28 March
'24

INSET DAY Mon 18 March

Term 5

Mon 15 April-Fri 24th May

May Bank Holiday Mon 6 May

Term 6

Mon 3 June - Tues 23 July

INSET DAY Fri 28 June

Last Day of Term

Tues 23 July

See [website](#) for more info.

Dear parents and carers,

I hope you were able to enjoy the half-term holiday and spend time together as a family. The children have returned, refreshed and ready for a new term with all their usual enthusiasm for all Elmlea provides.

As a school community we know that we have families with relatives and close friends in Israel and Palestine. Please know that everyone is here to support you all during these troubled times. Please let your child's class teacher know (if you haven't already) if there is a family circumstance that is affecting your child's wellbeing, so we can support them in school,

Children in Need 17th November– we will once again be supporting children in need this year and to show support the children can wear spotty or bright clothing on the day if they would like to. The link to donate to children in need is [here](#).



Dates for Christmas performances are below – Reception, Years 1,2, and 3 will be performing to parents at the end of this term. For those who are new to the school these take place in the Junior School hall and we are able to offer 2 tickets per child and you can choose which performance to attend as there will always be 2.

Lorraine Wright,
Executive Headteacher

Reception, Yr1, Yr2 & Yr3 Christmas performance dates and times



Year 3 - Mon 4th 1:45pm and Tues 5th Dec 6pm
Year 2 - Tues 5th 9:30am and Thurs 7th Dec 2pm
Year 1 - Tues 5th 2pm and Wed 6th Dec 9:30am
Reception - Wed 6th 2pm and Thurs 7th Dec 9:30am

We look forward to seeing you in the Junior School hall. Booking forms will be emailed shortly, **TWO tickets per child** and you can choose which performance/s to attend.





Odd Socks day Monday 13 November and anti-bullying week

Odd Socks day will kick off our anti-bullying week from 13th-17th November with the theme "Make a Noise About Bullying". Children are to come in wearing odd socks on Monday to celebrate what makes us all unique and spread kindness!

As part of anti-bullying week, the trust will be having an exciting visit from Shooting Star Entertainments who are going to be performing plays for us across the trust - KS2 (Captain Wonderweb and Puss in Boots), KS1 (The Ugly Duckling) and EYFS (Zorg and Zarg Find Friends).

Children in Need and Infant School Bedtime Story Event

All Infant children are invited to a bedtime story at school, read by their class teacher on **Thursday 16 November 4:30-5:00pm** to raise money for [Children in Need](#).

If your child would like to come and listen to a story, please can they arrive at 4:30pm in their pyjamas, with a bottle of water and teddy or cuddly toy to keep them company whilst they listen to some stories.

This annual event has been moved to the earlier slot of 4:30pm following feedback last year on timings. This is a trial and will be revisiting after the event. We encourage you to walk to and from school if you are able to. Children will need to be dropped off and picked up at their normal classroom doors. If your child is attending SHINE after school provision and you would like them to attend the bedtime story, please let them know so that they can arrange for drop-off and pick-up of your child. **The PTA will be serving drinks for parents in the hall!**

We will once again be supporting [Children in Need](#) across the Trust this year and to show support the children can wear **spotty** or **bright clothing** on **Friday 17th November** if they would like to.

If you would like to donate to Children in Need in support of this event please click [here](#).



Music News



We are delighted to announce that Bristol Beacon have found us a new **singing tutor**. Lessons can be booked for individual or small groups (more cost effective if you opt for this). There are currently some spaces left. If you are interested in signing up your child for singing lessons on Thursday afternoons, please visit [Bristol Beacon](#).

Junior Choir are practising like mad for their Winter Sing at the newly opened Beacon Hall on Friday 24 November. Tickets are now **LIVE** for your parents to purchase [here](#). Tickets cost £3.50 for children and £6.50 for adults.

Infant Choir are gearing up for their own event at the Spiegeltent on Wednesday 13th December. A letter will be sent out with further information shortly.

Miss Sadler, Co-ordinator of Music

Do you have any surplus spring bulbs?

Mr Weller is looking to add some plants to the Year 2 garden space and potentially around school. To help, he would welcome any surplus spring bulbs that you may have left over from home if you have done some planting recently. If you do have any to donate, please take to either school office marked for Mr Weller



Henleaze Tennis Club Christmas holiday camps - whole day available



Henleaze Lawn Tennis Club's Junior Tennis Club and holiday camps cater for children from 4-13 years of age and are designed to be fun for all levels of juniors. They are run by our highly experienced and fully qualified coaching team providing the children with a fun, social and active environment.

We are running both morning camps from 8.30am-12pm and full day camps 8.30am-3pm at Henleaze. Both options are available to book [here](#).

Shine December Holiday Clubs—20% off

Shine are back at your school running [Holiday Clubs](#) this festive period. The children who have come have really enjoyed their day with us so we would love to see more of you!

We have a Panto Play in a Day with an end of day performance, Little Star Dance Party, Mini & Multi Merry Mash-Up of lots of different activities. Book now with the code Early Booker to receive 20% off and don't worry if you book early and your plans change, we offer a 48 hour cancellation policy.

[Shine Holiday Clubs at Elmlea](#)



Inclusion Information and Support

National Sleep Helpline: We are here to help



Please find information [here](#) about this wonderful free resource that can help parents and children to learn more about their sleep and develop better bedtime routines. Sleep is essential to brain function, by helping children to sleep better, we can help them to succeed in school.

Up to 40% of adults and 50% of children (rising to 80% with a SEND diagnosis) have difficulties with their sleep. Yet in a recent survey, almost 60% of adults felt there was a lack of support for sleep issues. Sleep problems can leave people feeling isolated and lonely. Our free helpline is run by trained sleep advisors, many of whom are specialists in working with SEND. We can talk to young people directly, or parents (and adults, including older people, about their sleep issues). The helpline **03303 530 541** is open 5 times a week, Mon, Tues & Thurs evenings 7-9pm, and Mon & Weds mornings 9-11am. Click [here](#) for more information.

Bristol Parent Carer Forum coffee morning Monday 13 November

Bristol Parent Carer Forum will be holding a coffee morning here at Elmlea on Monday 13th November at 9am for any parents to drop in and chat with them.

Have a look at their [website](#) in the meantime as they hold lots of events around Bristol to support parents and carers.



Free Parent Pop-up Events - Southmead

POP UPS FOR PARENTS

Join our Children's Social Prescribing Team and expert partners for sessions to support parents of primary-aged children at the Greenway Centre, BS10 5PY They are free and open to all but please do sign up so we can know numbers. More information can be found [here](#).

SUPPORT THE PTA: CHRISTMAS 2023 at ELMLEA

With half term out the way let's step into Christmas! We've had a brilliant response to our festive sale so far, a big thank you to everyone that has already purchased!



Great news is that we have extended sales of our freshly cut Christmas trees and locally handmade gingerbread houses. Stock is limited and sales have been opened to the wider community, so be quick and go to www.pta-events.co.uk/eisa to avoid disappointment.

The Ultimate Sticky Toffee puddings have now sold out but for those who still wish to purchase a Christmas pudding, you have until midnight tonight to get your order in. A full list of ingredients and allergens for these items is available at www.pta-events.co.uk/eisa

All items will be ready for collection between 5-7pm on Thursday 7th December; see details below.

Looking for that perfect gift this Christmas? Keep an eye out for your child's Christmas card design coming home from school shortly. Packs of Christmas cards and other personalised items will be available to order from <http://www.pta-events.co.uk/eisa>

PLEASE NOTE: If there are any problems with your design, please get in touch with [Christmas Cards for Schools Ltd](#) directly on 0191 716 0024.

IMPORTANT DATES

16th Nov 4:30-5pm: Bedtime stories – we'll be selling drinks in the infants hall, so stay and have a chat with friends. Online donations to Children in Need for the stories (more details to follow)

4th - 7th Dec: Infant nativities & Junior winter play – we'll be selling warm drinks at the line-up & running a winter jumper swap (more details to follow)

7th Dec: Winter jumper day - donations to the PTA

7th Dec: Christmas tree, pudding and gingerbread house collection – we'll be selling warm drinks, sweet treats, hot chocolate cones and reindeer food. Come along and if you want wear your festive jumper and have a photo with Santa D and his elf helper!

And lastly, remember to use Easyfundraising when shopping online! We raise funds and it won't cost you a penny!

You can turn your everyday online shopping with over 7,000 brands into FREE donations for Elmlea Schools' Trust Association?! So far over 200 supporters have raised a whopping £1,507 for our schools!

And now, the benefits are even greater... Shop 5 times and collect 5 stamps to enter a monthly prize draw to win a donation of up to £3,000. There's no catch or hidden charges! If you still haven't yet signed up use this link... https://www.easyfundraising.org.uk/support-a-good-cause/step-1/?char=1799&invite=z9k4o6&referral-campaign=s2s&utm_campaign=refCROtest

Best wishes, The Elmlea PTA
elmlea.school.pta@gmail.com





Year Group News

Reception

Please look in your child's yellow reading folder for:

- NEW** Doodlemaths login! A free login for your child to use!
- The phonics sounds your child has been learning this week



The presentation from the Reading Information for Parents meeting yesterday will be sent out separately.

The Reception Team

Year 1

Welcome back Year 1! We have had a fun filled first week back. We loved hearing about what everyone had been up to in the holidays and enjoyed a circle time to share our highlights. This week, we have been reminding ourselves of writing expectations and using our new phonics sounds to build sentences. In maths, we have been looking at comparative language to compare both objects and numbers. Finally, our main highlight of the week was learning all about Diwali's festival of light. In our Religion and Worldviews lesson, we made clay pots which we will paint next week and yesterday afternoon, we were treated to a Diwali dance workshop!



Year 1 Team

KS1 Curriculum evening Tuesday 7th November from 6-7pm

We would like to invite all **Year 1 and 2 parents** to the KS1 Curriculum evening. This meeting will inform you about the expectations of the Elmlea Curriculum, with a focus on writing, reading and maths strategies taught in each year group. It will also provide you with some top tips about how to support your child's learning at home.

Please complete this [Microsoft Form](#) to confirm your attendance. I'm afraid we are unable to offer childcare during the meeting and is a parent meeting only.

Year 2

Year 2 had a great start to the term as we launched our Rainforest topic with a visit from animal encounters. We had the chance to hold a python, touch a bull frog and admire a scorpion. It was a great wow experience and we all felt very lucky to have them in. The children were all very brave. Then we looked at our new book called 'The Great Kapok Tree' and replicated the front cover with some water colour paints before a hot seating activity where some children became the animals. We look forward to continuing this next week along with our warm colour painting project. In maths we have been look at subtracting through ten and subtracting from ten. Two different strategies. We will add an explainer video to seesaw for parents to explore..



Thank you, Year 2 team.



Year 3 Y3 have had a fantastic first week back to school which started with our Egyptian Day when children learnt more about the Ancient Egyptian gods and goddesses, hieroglyphics and created their own clay scarab beetles. Pupils were also very lucky to have two workshops run by visitors to school, one Virtual Reality and the other, an escape room, both linked to our current history topic of the Ancient Egyptians. In English, pupils have started our unit of work inspired by The Polar Bear Explorers' Club by Alex Bell. In maths,

children have developed their understanding about the properties of 3D shapes. We have also started our new science unit about rocks and soils.

Well done, Year 3!

Reminder - Y3 Play Performances

Monday 4th December - matinee performance commencing at 1.45pm

Tuesday 5th December - evening performance commencing at 6.00pm



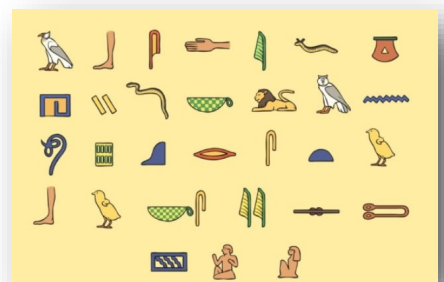
The Year 3 Teaching Team

Year 4 Year 4 have had an exciting start to the term by coming into school dressed in Ancient Egyptian costumes this week!

We have been working on many fun activities such as writing on papyrus paper in hieroglyphics, Egyptian claywork, making scarab beetles and making top trump cards!

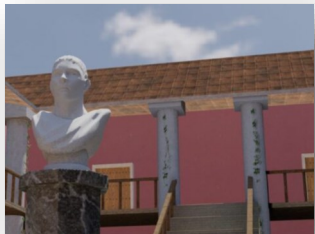
We also had an amazing opportunity to use VR headsets to explore the Nile, ancient tombs, Pharaohs and visit temples too!

What a fun and exciting week!

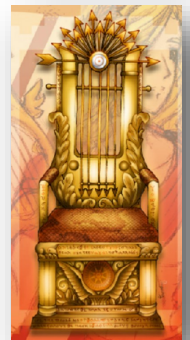


Y4 Teaching Team

Year 5 We've had a great start to Term 2! We have started to work on our Ancient Greece non-chronological reports and we're looking forward to bringing together lots of our knowledge from our history lessons. In maths, we have been working on fractions and have been focusing on comparing fractions and recognising equivalent fractions. We are excited to be planning and creating



thrones for Greek gods and goddesses in DT this term and this week we created some mood board inspiration in the Computer Suite. We 'travelled' to Ancient Greece in history this week via the magic of VR headsets. We really enjoyed exploring what life was like. During our Religion and World Views lesson, we started our topic on Judaism and explored a range of artefacts and symbols. Well done for a great start to the term, Year 5!



Year 5 Team

Year 6 What a fantastic start to term 2 year 6!

We were lucky enough to immerse ourselves in the world of Ancient Greece, where we went on an exciting virtual tour of famous temples and walked around an Olympic Stadium using special VR Headsets.

This really brought our topic to life!

Not only that, but to launch our new science topic on 'Light', we used

lots of equipment to generate questions about how light travels and how it is reflected and refracted. What an illuminating experience!



Year 6 Team

Year 6 Leavers' - Calling all Year 6 parents and carers. As you probably know, it is traditional to organise hoodies, a year book and a party for the Year 6 leavers. The hoodies are already in hand and you will receive further information on this shortly, but we are looking for volunteers to arrange the **year book** and **party** - it would make sense to have one from each class, but more hands make light work! It's such a lovely thing to do for the leavers so please do step forward and get involved. Email the office on info@elmleaschoolstrust.com